

## CAPS-ICE-24

### Enterprise Class 4U 24 Bay Rackmount Network Video Recorder

#### 1000 to 1100 Mbps of Throughput

The Capsule Technologies ICE-24 is an enterprise network video recorder engineered for mid to large scale surveillance deployments that require exceptional throughput performance with no compromise on redundancy thanks to a dual-controller design.

The ICE-24 is powered by CAPS-OS™ firmware which optimizes the flow of video streams from the network to the storage, eliminating any form of I/O bottleneck.

Independent official certification benchmarks from VMS vendors has recorded a sustained maximum performance throughput of 1100 Mbps which makes the ICE-24 the fastest Network Video Recorder of its category.

#### KEY FEATURES

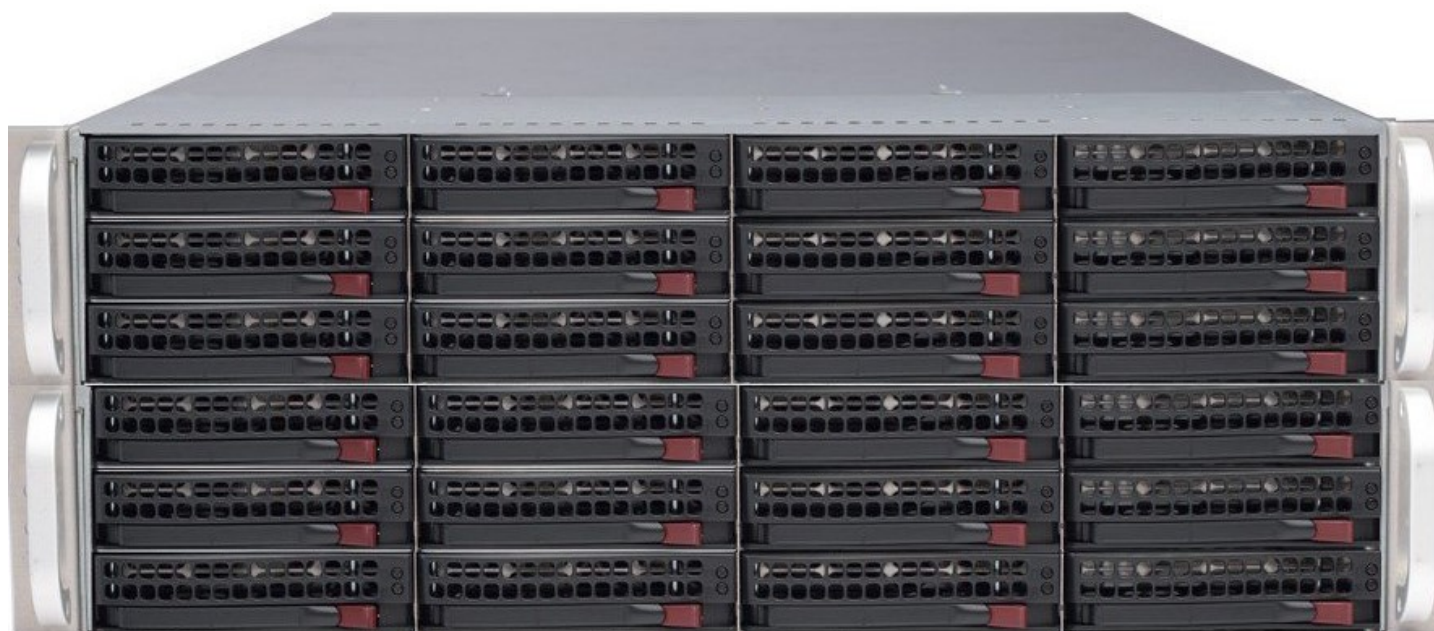
The ICE-24 is an Hyper-Converged Open Storage system delivering multiple benefit for large scale deployments including:

- Compatible with any Video Management System of the Market Microsoft Windows based or Linux based
- Up to 240 TB of maximum raw storage
- 8x 1Gb Links dedicated for video streams
- No bottleneck on Network or Storage backend with CAPS-OS™ firmware
- High availability with Dual controllers design



#### Performance, Resilience, Scalability

- Dual interconnected Controllers
- Dual Intel® Xeon® Processor E3
- Up to 240TB of maximum raw storage
- 24 x 3.5" hot-swappable drives
- 8 x 1Gb Network Links
- Compliant BOSCH Direct-to-iSCSI recording



# CAPS-ICE-24

## 4U 24 BAY RACKMOUNT

### SYSTEM

<b>Processor</b>	Dual Intel® Xeon® Processor E3 1240v5 in two active-active controllers
<b>Operating System</b>	Windows server® 2012 R2 Windows® 10 Pro Linux CentOS, Ubuntu, Debian
<b>Memory</b>	64 GB DDR4 2133Mhz ECC Registered Unbuffered
<b>Maximum Raw Storage</b>	240TB
<b>Video Outputs</b>	VGA
<b>Networking</b>	8 x1GbE LAN Ports dedicated for video streams
<b>RAID Level support Options</b>	0, 1, 5, 6, 10, 50, 60
<b>Firmware</b>	CAPS-OS™ Hypervisor, RAID engine and iSCSI
<b>Tested / Certified Video Management Software</b>	Milestone Xprotect Enterprise and Expert, Axon Next, Digifort, Exacqvision, BOSCH BVMS 6.x, 7.x, Cathexisvision
<b>Warranty</b>	3 Year

### MECHANICAL

<b>Form factor</b>	4U
<b>OS Drive Bays</b>	2 x 2.5"
<b>Data Drive Bays</b>	24 x 3.5" Hot-Swappable
<b>Power Supply</b>	4x 500W high-efficiency redundant power supplies with PMBus
<b>AC Input VAC Freq</b>	100-240 V, 50-60 Hz, 6.1-2.6 Amp
<b>Ambient Operating Temp</b>	5°C ~ 35°C (41°F ~ 95°F)
<b>Operating Humidity</b>	8% ~ 90% (non-condensing)
<b>Dimension (w x h x d)</b>	437mm x 178mm x 647mm



**BOSCH**  
Invented for life

